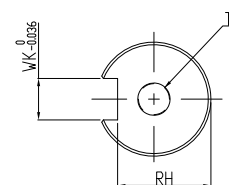
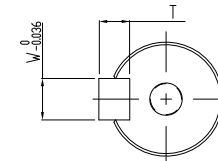


DIMENSION TABLE (MODEL WITHOUT BRAKE)

MODEL	LL	LR	LS	LC	S	LW	WK	W	T	RH	TP
ECMA-J□1010AS	153.25	45	37.0	7	22	—	—	—	—	—	M6, Depth 20
ECMA-J□1010CS						—	—	—	—	—	—
ECMA-J□1010ES						32	8	8	7	18	—
ECMA-J□1010GS						32	8	8	7	18	M6, Depth 20
ECMA-J□1010PS						32	8	8	7	18	M6, Depth 20
ECMA-J□1010RS	199	45	37.0	7	22	—	—	—	—	—	M6, Depth 20
ECMA-J□1020AS						—	—	—	—	—	—
ECMA-J□1020CS						32	8	8	7	18	—
ECMA-J□1020ES						32	8	8	7	18	—
ECMA-J□1020GS						32	8	8	7	18	M6, Depth 20



SHAFT END DETAILS



KEY DETAILS

REV.	ECN NO.

台達電子工業股份有限公司 <b>DELTA ELECTRONICS, INC.</b>		DRAWN:	DESIGN:
THESE DRAWINGS AND SPECIFICATIONS ARE THE PROPERTY OF DELTA ELECTRONICS, INC. AND SHALL NOT BE REPRODUCED OR USED AS THE BASIS FOR THE MANUFACTURE OR SELL OF APPARATUS OR DEVICES WITHOUT PERMISSION.		APPROVE:	DATE: 10/21/2013
DIMENSIONAL TOLERANCES ( ) ( ) ( ) ( ) ANGLES DECIMALS <50 ±0.1 <50 ±0.15 <50 ±0.2 <30° ±0.1° X ±0.3 >50-100 ±0.15 >50-100 ±0.2 >50-100 ±0.25 >30°-60° ±0.3° X.X ±0.2 >100-200 ±0.2 >100-200 ±0.25 >100-200 ±0.3 >60°-90° ±0.5° X.XX ±0.1 >200 ±0.2 >200 ±0.25 >200 ±0.3		DESCRIPTION: CONFIDENTIAL MOTOR_F100_380V	PART NO.: REV. 00
USED ON:	UNIT: mm	SCALE:	SHEET 1 OF 1