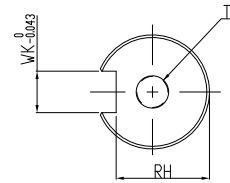
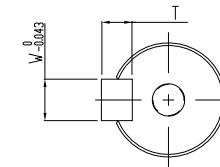


DIMENSION TABLE (MODEL WITH BRAKE)

MODEL	LL	LR	LS	S	LW	WK	W	T	RH	TP
ECMA-F□1855B3	311.7	113	108.5	42	---	---	---	---	---	M16, Depth 32
ECMA-F□1855D3					90	12	12	8	37	
ECMA-F□1855Q3					---	---	---	---	---	
ECMA-F□1875B3	376.1	113	108.5	42	---	---	---	---	---	M16, Depth 32
ECMA-F□1875D3					90	12	12	8	37	
ECMA-F□1875Q3					---	---	---	---	---	
ECMA-F□1875S3	---	---	---	---	---	---	---	---	---	---



SHAFT END DETAILS



KEY DETAILS

台達電子工業股份有限公司 DELTA ELECTRONICS, INC.	DRAWN:	DESIGN:
	APPROVE:	DATE: 10/21/2013
THESE DRAWINGS AND SPECIFICATIONS ARE THE PROPERTY OF DELTA ELECTRONICS, INC. AND SHALL NOT BE REPRODUCED OR USED AS THE BASIS FOR THE MANUFACTURE OR SELL OF APPARATUS OR DEVICES WITHOUT PERMISSION.	DIMENSIONAL TOLERANCES () () () () ANGLES DECIMALS <50 ±0.1 <50 ±0.15 <50 ±0.2 <30° ±0.1° ±0.3 >50-100 ±0.15 >50-100 ±0.2 >50-100 ±0.25 >30°-60° ±0.3° ±0.2 >100-200 ±0.2 >100-200 ±0.25 >100-200 ±0.3 >60°-90° ±0.5° X.XX ±0.1 >200 ±0.2 >200 ±0.25 >200 ±0.3	
	DESCRIPTION: CONFIDENTIAL MOTOR_F180_5.5~7.5KW_BRAKE	PART NO.:
USED ON	UNIT: mm	SHEET 1 OF 1