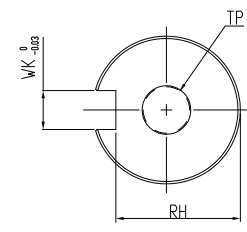
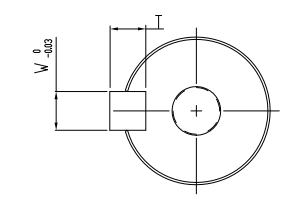


DIMENSION TABLE (MODEL WITHOUT BRAKE)

MODEL	LL	LR	LS	S	LW	WK	W	T	RH	TP	LP	LE
ECMA-C□0910AS	153.2	35.0	30	16	—	—	—	—	—	M5, Depth 15	300	300
ECMA-C□0910CS					20	5	5	5	13	M5, Depth 15		
ECMA-C□0910PS					20	5	5	5	13	M5, Depth 15		
ECMA-C□0910RS	130.2	35.0	30	16	—	—	—	—	—	M5, Depth 15	300	300
ECMA-C□0907AS					20	5	5	5	13	M5, Depth 15		
ECMA-C□0907CS					20	5	5	5	13	M5, Depth 15		
ECMA-C□0907PS					20	5	5	5	13	M5, Depth 15		
ECMA-C□0907RS	20	5	5	5	13	M5, Depth 15						



SHAFT END DETAILS



KEY DETAILS

		DRAWN:		DESIGN:	
APPROVE:		DATE: 10/21/2013			
THESE DRAWINGS AND SPECIFICATIONS ARE THE PROPERTY OF DELTA ELECTRONICS, INC. AND SHALL NOT BE REPRODUCED OR USED AS THE BASIS FOR THE MANUFACTURE OR SELL OF APPARATUS OR DEVICES WITHOUT PERMISSION.		DIMENSIONAL TOLERANCES () () () () ANGLES DECIMALS <50 ±0.1 <50 ±0.15 <50 ±0.2 <30° ±0.1° ±0.3 >50-100±0.15 >50-100±0.2 >50-100±0.25 >30°-60°±0.3° ±0.2 >100-200±0.2 >100-200±0.25 >100-200±0.3 >60°-90°±0.5° X.XX±0.1 >200~ ±0.2% >200~ ±0.25% >200~ ±0.3%			
DESCRIPTION: MOTOR_F86		CONFIDENTIAL		PART NO.:	
USED ON	UNIT mm	SCALE	SHEET 1 OF 1		REV. 00