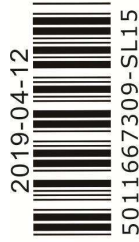


DVP-Slim DIO Modules (06~16 Points)

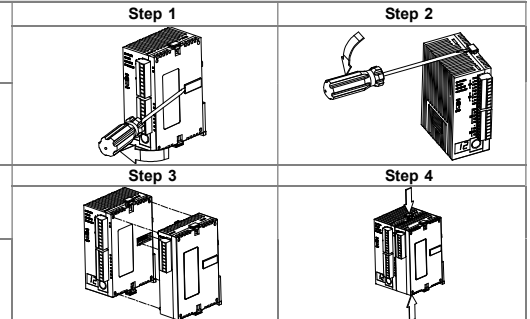
EN	Instruction Sheet
TR	Bilgi Dökümanı
TW	薄型數位模組簡易版說明
CN	薄型數位模块简易版说明



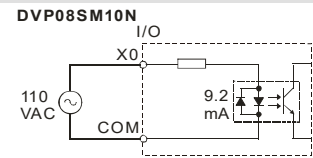
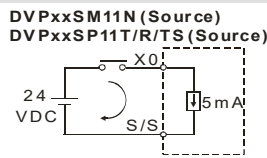
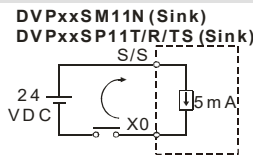
EN	⚡ This is an OPEN TYPE module and therefore should be installed in an enclosure free of airborne dust, humidity, electric shock and vibration. The enclosure should prevent non-maintenance staff from operating the device (e.g. key or specific tools are required for operating the enclosure) in case danger and damage on the device may occur.
FR	⚡ Ceci est un module ouvert et il doit donc être installé dans un coffret à l'abri des poussières, des vibrations et ne pas être exposé aux chocs électriques. Le boîtier ou l'armoire doit éviter toute action d'un personnel autre que celui affecté à la maintenance de l'appareil (par exemple, clefs, outils spécifiques pour l'ouverture du coffret), ceci afin d'éviter tout accident corporel ou endommagement du produit.
TR	⚡ Bu ürün AÇIK TİP bir modül olup toz, rutubet, elektrik şoku ve titreşimden uzak kapalı yerlerde muhafaza edilmelidir. Yanlış kullanım sonucu ürünün zarar görmesini önlemek için yetkili olmayan kişiler tarafından ürüne müdahale edilmesini önleyecek koruyucu önlemler alınmalıdır. (Ürünün bulunduğu panoya kilit konulması gibi).
TW	⚡ 本機為開放型 (OPEN TYPE) 機種，因此使用者使用本機時，必須將之安裝於具防塵、防潮及免於電擊衝擊意外之外殼配線箱內。另必須具備保護措施 (如：特殊之工具或鑰匙才可打開) 防止非維護人員操作或意外衝擊本體，造成危險及損壞。
CN	⚡ 本机为开放型 (OPEN TYPE) 机种，因此使用者使用本机时，必须将其安装于具防尘、防潮及免于电击/冲击意外的外壳配线箱内。另必须具备保护措施 (如：特殊的工具或钥匙才可打开) 防止非维护人员操作或意外冲击本体，造成危险及损坏。

EN	Please refer to the DVP-Slim DIO instruction sheet for more information. (Hardware specification included)	TR	Daha fazla bilgi için DVP-Slim DIO talimat sayfasına bakın. (Donanım özellikleri dahil)
TW	詳細資料請參考 DVP-Slim DIO 安裝手冊 (含硬體詳細規格)	CN	详细资料请参考 DVP-Slim DIO 安装手册 (含硬件详细规格)
EN	Assembly	TR	Montaj
		TW	安裝
		CN	组装

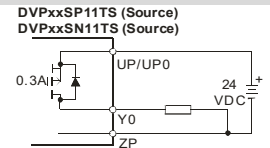
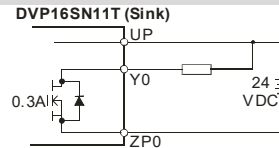
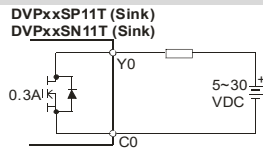
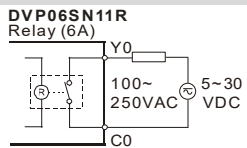
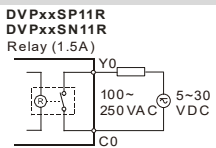
EN	Install the device by following steps 1~4 (on the right).		
TR	Aygıtı, sağda anlatılan 1'den 4'e kadar olan adımları takip ederek montajını yapın.		
TW	依照右方所示的步驟 1~4 進行安裝。		
CN	依照右方所示的步驟 1~4 进行安裝。		



EN	Input Wiring Diagram	TR	Giriş kablolama şeması	TW	輸入接線圖	CN	輸入接线图
----	----------------------	----	------------------------	----	-------	----	-------



EN	Output Wiring Diagram	TR	Çıkış kablolama şeması	TW	輸出接線圖	CN	输出接线图
----	-----------------------	----	------------------------	----	-------	----	-------



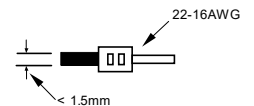
EN	Wiring	TR	Bağlantı	TW	配線	CN	配线
----	--------	----	----------	----	----	----	----

EN Please use single-core or multi-core cables. The diameters of the cables used should be within the range between 22 and 16 AWG (1.5 mm). The specifications for the terminals and the wiring are shown in the figure. The temperature of the copper conductor should be 60/75°C.

TR Lütfen tek damarlı veya çok damarlı kablo kullanın. Kullanılan kablo çapı 22 ve 16 AWG (<1.5 mm) aralığında olmalıdır. Terminal ve bağlantı özellikleri şekilde gösterilmiştir. Bakır iletkenin sıcaklığı 60/75°C 'ye kadar olmalıdır.

TW 輸出 / 入配線端請使用 22-16AWG (1.5mm) 單蕊裸線或多蕊線。只能使用 60/75°C 的銅導線。

CN 輸出 / 入配线端请使用 22-16AWG (1.5mm) 单蕊裸线或多蕊线。只能使用 60/75°C 的铜导线。



EN Dimensions(mm) & Product Profile

TR Ölçüler(mm) & Ürün Görünüşü

TW 尺寸 (mm) 及產品外觀

CN 尺寸 (mm) 及產品外觀

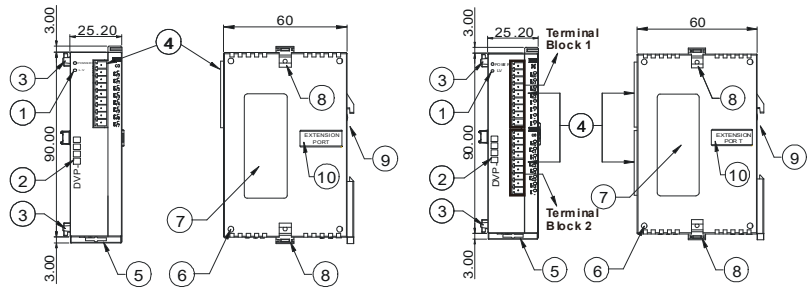


Table with 4 columns: EN, TR, TW, CN. Rows 1-10 describing components like Power indicator, Model name, Extension unit fixing clip, I/O terminals, DIN rail clip, Extension unit positioning hole, Nameplate, Extension unit fixing clip, DIN rail (35mm), and Connection port for extension unit.

EN I/O Types & Arrangement TR G / Ç Tipleri ve Düzenlemeleri TW 輸入/輸出型態與配置 CN 輸入/輸出型态与配置

Table with columns: Module Name, Input no., Input type, Output no., Output type, Terminal block 1, Terminal block 2. Lists various module models and their terminal configurations.

Table with columns: Part Name, Hazardous Substances (Pb, Hg, Cd, Cr VI, PBB, PBDE), and company information for Delta Electronics and Delta Greentech in various regions.

Asia
Delta Electronics (Shanghai) Co., Ltd.
Delta Electronics (Japan), Inc.
Delta Electronics (Korea), Inc.
Delta Electronics (Thailand) PCL.
Delta Energy Systems (Singapore) Pte Ltd.
Delta Electronics (India) Pvt. Ltd.
Delta Electronics (Australia) Pty Ltd.

Americas
Delta Electronics (Americas) Ltd.
Delta Greentech (Brasil) S/A
Delta Electronics International Mexico S.A. de C.V.
EMEA
Headquarter: Delta Electronics (Netherlands) B.V.
DACH: Delta Electronics (Netherlands) B.V.

France: Delta Electronics (France) S.A.
Iberia: Delta Electronics Solutions (Spain) S.L.U.
Italy: Delta Electronics (Italy) S.r.l.
Russia: Delta Energy System LLC
Turkey: Delta Greentech Elektronik San. Ltd. St. (Turkey)
GCC: Delta Energy Systems AG (Dubai BR)
Egypt + North Africa: Delta Electronics