



DVP08ST11N

Instruction Sheet

Bilgi Dökümanı

安裝說明

安 装 说 明

Toggle Switch-Type Digital Extension Module

Toggle Switch Tip Dijital İlave Modül

搖頭開關式數位擴充模組

摇头开关式数位扩充模块



Warning

EN *⚠* DVP08ST11N is an OPEN-TYPE device. It should be installed in a control cabinet free of airborne dust, humidity, electric shock and vibration. To prevent non-maintenance staff from operating DVP08ST11N, or to prevent an accident from damaging DVP08ST11N, the control cabinet in which DVP08ST11N is installed should be equipped with a safeguard. For example, the control cabinet in which DVP08ST11N is installed can be unlocked with a special tool or key.

EN *⚠* DO NOT connect AC power to any of I/O terminals, otherwise serious damage may occur. Please check all wiring again before DVP08ST11N is powered up. After DVP08ST11N is disconnected, DO NOT touch any terminals in a minute. Make sure that the ground terminal ⑩ on DVP08ST11N is correctly grounded in order to prevent electromagnetic interference.

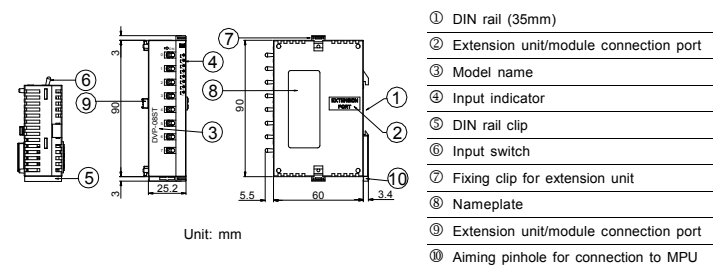
FR *⚠* DVP08ST11N est un module OUVERT. Il doit être installé que dans une enceinte protectrice (boîtier, armoire, etc.) saine, dépourvue de poussière, d'humidité, de vibrations et hors d'atteinte des chocs électriques. La protection doit éviter que les personnes non habilitées à la maintenance puissent accéder à l'appareil (par exemple, une clé ou un outil doivent être nécessaires pour ouvrir a protection).

FR *⚠* Ne pas appliquer la tension secteur sur les bornes d'entrées/Sorties, ou l'appareil DVP08ST11N pourra être endommagé. Merci de vérifier encore une fois le câblage avant la mise sous tension du DVP08ST11N. Lors de la déconnection de l'appareil, ne pas toucher les connecteurs dans la minute suivante. Vérifier que la terre est bien reliée au connecteur de terre ⑩ afin d'éviter toute interférence électromagnétique.

Introduction

- Thank you for choosing Delta DVP series programmable logic controller. DVP08ST11N shall be used together with PLC SLIM TYPE PLC occupying 8 input points. Including MPU, the digital I/O can be extended to maximum 256 points. Besides, maximum 8 special extension modules (AD/DA/XA/PT/TC/PU) are extendable from MPU.
- No external power supply and signals are required, DVP08ST11N allows you to directly control its input points by its switches.
- As digital switches, DVP08ST11N is able to input instructions without required external wiring for receiving signals. Besides, DVP08ST is handy and safe for using in teachings.

Product Profile & Outline



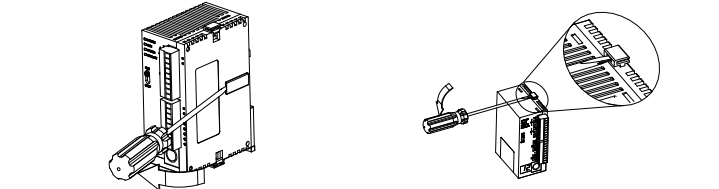
Electrical Specifications

Model	DVP08ST11N
Power voltage	24VDC (-15% ~ 20%) (Power is supplied by the internal bus of MPU)

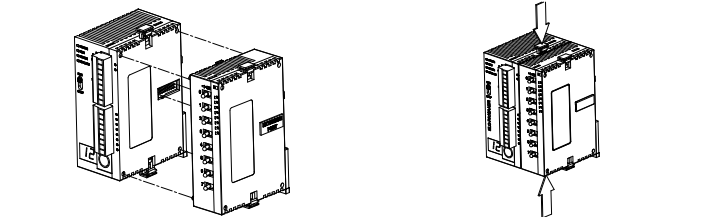
Model	DVP08ST11N
Power consumption	0.5W
Noise immunity	ESD (IEC 61131-2, IEC 61000-4-2): 8KV Air Discharge EFT (IEC 61131-2, IEC 61000-4-4): Power Line: 2KV, Digital I/O: 1KV, Analog & Communication I/O: 1KV Damped-Oscillatory Wave: Power Line: 1KV, Digital I/O: 1KV RS (IEC 61131-2, IEC 61000-4-3): 26MHz ~ 1GHz, 10V/m
Operation/storage	Operation : 0°C ~ 55°C (temperature), 5 ~ 95% (humidity), Pollution degree 2 Storage: -25°C ~70°C (temperature), 5 ~ 95% (humidity)
Vibration/shock immunity	International standard: IEC 61131-2, IEC 68-2-6 (TEST Fc)/IEC 61131-2 & IEC 68-2-27 (TEST Ea)
Weight (g)	60g

How to Install

- Use a screwdriver to open the side cover and reveal the connecting port.
- Use the screwdriver to lift and unfasten the fixing clip.



- Accurately connect the extension module to the MPU by using the pinholes at each corner.
- Secure the extension module to the MPU by pushing down the fixing clips.



- Order of the I/O point No.: The input points of the first extension module are lined up from X20 and output points are lined up from Y20. The rule applies to all MPU connections with extension modules of any number of points.

Model	Input points	Output points	No. of input points	No. of output points
DVP12SA11R	8	4	X0 ~ X7	Y0 ~ Y3
DVP08ST11N	8	0	X20 ~ X27	-

Model	Input points	Output points	No. of input points	No. of output points
DVP16SP11R	8	8	X30 ~ X37	Y20 ~ Y37

Troubleshooting

Input LED Indicator

The On/Off of input signals can be indicated by the input LED indicator. When the input is On, the LED will be on. If error occurs, please check if the loops of the LED and input signal are normal by using HPP/WPLSoft. Please also be aware that:

- DO NOT place DVP08ST11N under direct sunlight and please avoid placing it next to overheating objects in case the high temperature will affect the functions of DVP08ST11N.
- Please clean the airborne or conductive dust on the panel on a regular basis.

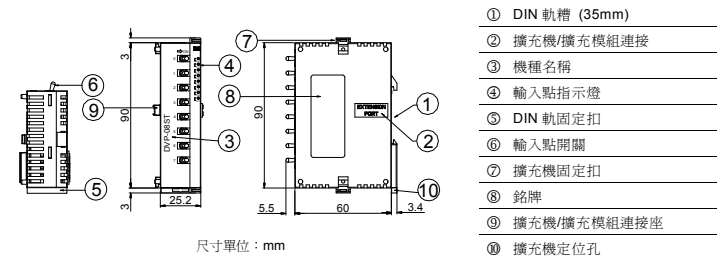
注意事項

- 請在使用之前，詳細閱讀本使用說明書。
- 本機為開放型 (Open Type) 機殼，因此使用者使用本機時，必須將之安裝於具防塵、防潮及免于電擊或衝擊意外之外殼配線箱內。另必須具備保護措施 (如：特殊之工具或鑰匙才可打開) 防止非維護人員操作或意外衝擊本體，造成危險及損壞。
- 請勿在上電時觸摸任何端子。

產品簡介

- 謝謝您採用台達 DVP 系列可程式控制器。本產品需搭配台達之 PLC 使用，可任意連接台達 PLC SLIM TYPE 前級或後級，連接後佔用輸入點 8 點，含主機最大數位輸入/輸出擴充可達 256 點。另備特殊模組 (AD/DA/XA/PT/TC/PU) 擴充功能，最多可擴充 8 台特殊模組。
- 無須外部電源，不需外接訊號，以指撥方式控制模組之輸入點編號動作。
- 當作一個數位開關使用，可直接對輸入點執行動作且不需外接訊號，另外也能在教學上方便又安全的使用。

產品外觀

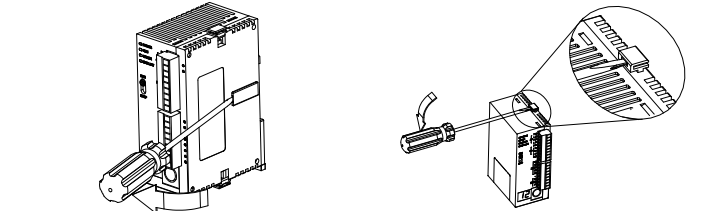


電氣規格

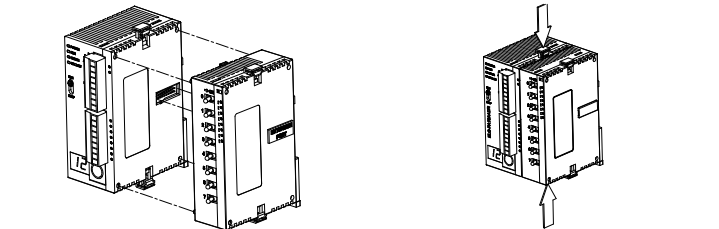
機種	DVP08ST11N
項目	
電源電壓	24VDC (-15% ~ 20%) (由主機經由內部匯流排供應)
消耗電力	0.5W
雜訊免疫力	ESD (IEC 61131-2, IEC 61000-4-2): 8KV Air Discharge EFT (IEC 61131-2, IEC 61000-4-4): Power Line: 2KV, Digital I/O: 1KV, Analog & Communication I/O: 1KV Damped-Oscillatory Wave: Power Line: 1KV, Digital I/O: 1KV RS (IEC 61131-2, IEC 61000-4-3): 26MHz ~ 1GHz, 10V/m
操作/儲存環境	操作 : 0°C ~ 55°C (溫度), 5 ~ 95%(濕度), 污染等級 2 儲存 : -25°C ~ 70°C (溫度), 5 ~ 95% (濕度)
耐振動/衝擊	國際標準規範 IEC 61131-2, IEC 68-2-6 (TEST Fc)/IEC 61131-2 & IEC 68-2-27 (TEST Ea)
重量 (約), (g)	60g

系統安裝

- 利用螺絲起子將擴充側蓋打開，會出現擴充機連接口。
- 再利用螺絲起子將擴充機固定扣往上撥。



- 調整好主機和擴充機的定位孔，並且將主機的擴充機連接口與擴充機接合，此時主機與擴充機之間緊密結合。
- 將擴充機固定扣往下扣住，完成與主機之系統組合。



- 輸出點序號排列：無論使用任何點數的主機連接擴充機，所連接的第一台擴充機，輸入點編號由 X20 依序排列，輸出點編號亦由 Y20 開始依序排列。說明如下：

機種	輸入點數	輸出點數	輸入點編號	輸出點編號
DVP12SA11R	8	4	X0 ~ X7	Y0 ~ Y3
DVP08ST11N	8	0	X20 ~ X27	-
DVP16SP11R	8	8	X30 ~ X37	Y20 ~ Y37

異常檢修

輸入點指示 LED

輸入點信號 On/Off 可由輸入點指示燈之亮/滅來顯示。當輸入點信號動作條件成立時，該指示燈會亮。因此若發現有異常時請利用 HPP/WPL，檢查指示燈號及輸入信號回路是否正常，並同時注意下列各項：

- 請勿將 DVP 置於太陽下直射並避開過熱之物體，以免機器內溫度過高影響功能。
- 請定期清潔面板內空氣灰塵或電子導電灰塵。

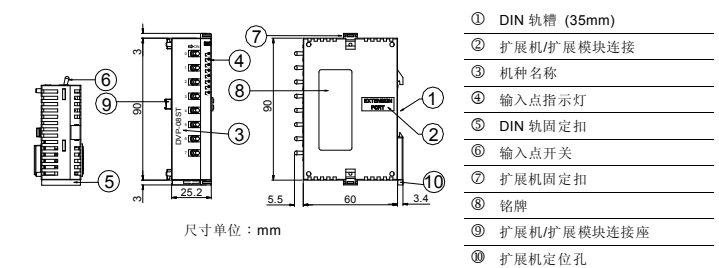
注意事項

- 請在使用之前，詳細閱讀本使用說明書。
- 本機為開放型 (Open Type) 機壳，因此使用者使用本機時，必須將其安裝於具防塵、防潮及免于电击或冲击意外的外壳配线箱内。另必须具备保护措施 (如：特殊的工具或钥匙才可打开) 防止非维护人员操作或意外冲击本体，造成危险及损坏。
- 请勿在上电时触摸任何端子。

產品簡介

- 谢谢您采用台达 DVP 系列可编程控制器。本产品需搭配台达的 PLC 使用，可任意连接台达 PLC SLIM TYPE 前级或后级，连接后占用输入点 8 点，含主机最大数字输入/输出扩展可达 256 点。另备特殊模块 (AD/DA/XA/PT/TC/PU) 扩展功能，最多可扩展 8 台特殊模块。
- 无须外部电源，不需外接信号，以指拨方式控制模块的输入点编号动作。
- 当作一个数字开关使用，可直接对输入点执行动作且不需外接信号，另外也能在教学上方便又安全的使用。

產品外觀

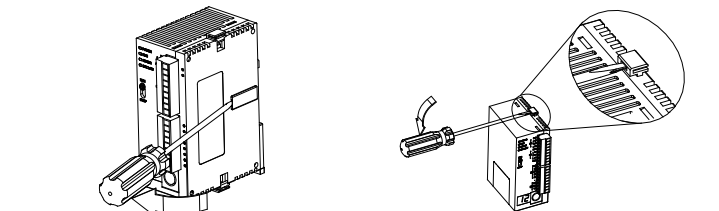


電氣規格

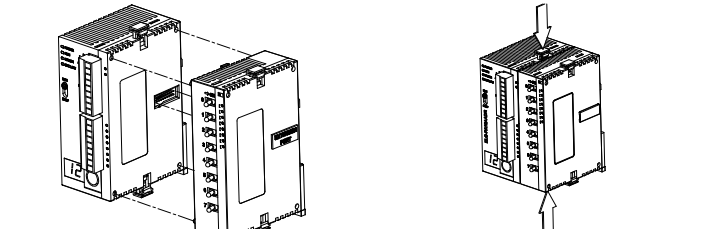
機種	DVP08ST11N
項目	
电源电压	24VDC (-15% ~ 20%) (由主机经由内部汇流排供应)
消耗电力	0.5W
噪声免疫力	ESD (IEC 61131-2, IEC 61000-4-2): 8KV Air Discharge EFT (IEC 61131-2, IEC 61000-4-4): Power Line: 2KV, Digital I/O: 1KV, Analog & Communication I/O: 1KV Damped-Oscillatory Wave: Power Line: 1KV, Digital I/O: 1KV RS (IEC 61131-2, IEC 61000-4-3): 26MHz ~ 1GHz, 10V/m
操作/儲存环境	操作 : 0°C ~ 55°C (溫度), 5 ~ 95%(濕度), 污染等級 2 儲存 : -25°C ~ 70°C (溫度), 5 ~ 95% (濕度)
耐振動/冲击	國際標準規範 IEC 61131-2, IEC 68-2-6 (TEST Fc)/IEC 61131-2 & IEC 68-2-27 (TEST Ea)
重量 (約), (g)	60g

系統安裝

- 利用螺絲起子將擴展側蓋打開，會出現擴展機連接口。
- 再利用螺絲起子將擴展機固定扣往上撥。



- 調整好主機和擴展機的定位孔，並且將主機的擴展機連接口與擴展機接合，此時主機與擴展機之間緊密結合。
- 將擴展機固定扣往下扣住，完成與主機之系統組合。



- 输出点序号排列：无论使用任何点数的主机连接扩展机，所连接的第一台扩展机，输入点编号由 X20 依序排列，输出点编号亦由 Y20 开始依序排列。说明如下：

機種	輸入點數	輸出點數	輸入點編號	輸出點編號
DVP12SA11R	8	4	X0 ~ X7	Y0 ~ Y3
DVP08ST11N	8	0	X20 ~ X27	-
DVP16SP11R	8	8	X30 ~ X37	Y20 ~ Y37

異常檢修

輸入點指示 LED

输入点信号 On/Off 可由输入点指示灯的亮/灭来显示。当输入点信号动作条件成立时，该指示灯会亮。因此若发现有异常时请利用 HPP/WPL，检查指示灯号及输入信号回路是否正常，并同时注意下列各项：

- 请勿将 DVP 置于太阳下直射并避开过热的物体，以免机器内温度过高影响功能。
- 请定期清洁面板内空气灰尘或电子导电灰尘。

⚠ Uyarı

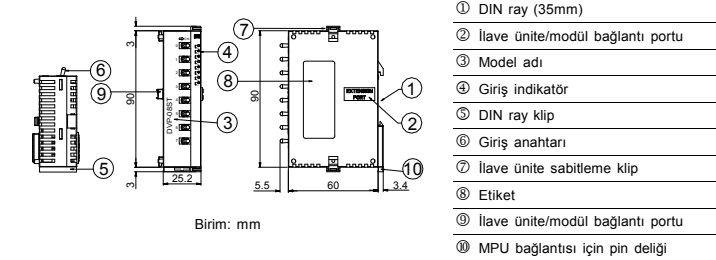
TÜRKÇE

- ✓ DVP08ST11N ürününü kullanmadan önce lütfen bu bilgi dökümanını tamamen okuyunuz.
- ✓ DVP08ST11N ürünü AÇIK-TİP bir ünite olup, kurulumu yüksek sıcaklık, yüksek rutubet, aşırı titreşim, aşındırıcı gaz, sıvı, toz ve metal parçaların bulunduğu ortamlardan uzak ve kapalı yerlere yapılmalıdır. Tehlikeleri ve ürünün zarar görmesini engellemek için yetkili olmayan kişilerin ürüne müdahale etmesini engelleyecek önlemler alınmalıdır. (Ör: Panoya kilit konulması gibi).
- ✓ Üründe enerji varken terminallerine dokunmayınız.

1 Önsöz

- Delta DVP serisi PLC'leri seçtiğiniz için teşekkürler. DVP08ST11N ünitesi DVP serisi MPU'lara doğrudan bağlanabilir ve 8 giriş noktası işgal eder. Dijital I/O üniteleri maksimum 256 noktaya kadar genişletilebilir. (MPU dahil). Ayrıca MPU'ya 8 özel modül (AD/DA/XA/PT/TC/PU) bağlanabilir.
- DVP08ST11N ünitesi harici bir güç kaynağı ve sinyal girişi bağlantısına gerek kalmadan giriş noktalarını üzerindeki switchler ile doğrudan kontrol edilmesine izin verir.
- Dijital switchlerde olduğu gibi, DVP08ST11N ünitesine harici bir güç kaynağı ve sinyal bağlantısı olmadan giriş sinyalleri uygulanabilir. DVP08ST ön programlama ve eğitim çalışmaları için çok kullanışlıdır.

■ Ürün Profili & Taslağı

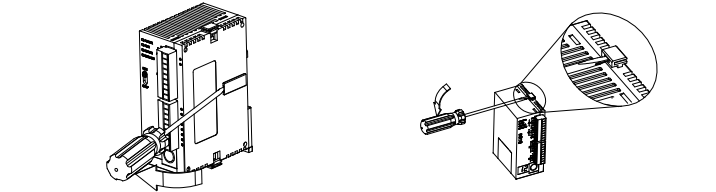


2 Elektriksel Özellikler

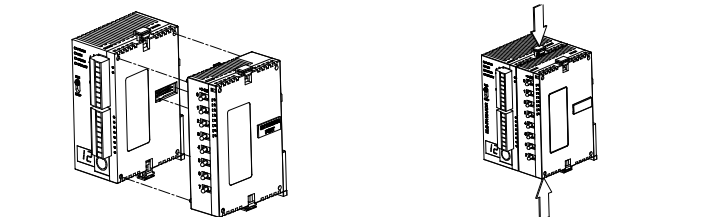
Model	DVP08ST11N
Madde	DVP08ST11N
Power voltajı	24VDC (-15% ~ 20%) (Power MPU'nun dahili bus'tan)
Güç tüketimi	0.5W
Ses bağışıklığı	ESD (IEC 61131-2, IEC 61000-4-2): 8KV Air Discharge EFT (IEC 61131-2, IEC 61000-4-4): Power Line: 2KV, Digital I/O: 1KV, Analog & Communication I/O: 1KV Damped-Oscillatory Wave: Power Line: 1KV, Digital I/O: 1KV RS (IEC 61131-2, IEC 61000-4-3): 28MHz ~ 1GHz, 10V/m
Çalışma/saklama	Çalışma : 0°C ~ 55°C (sıcaklık), 5 ~ 95% (rutubet), Kirlenme derecesi 2 Saklama: -25°C ~70°C (sıcaklık), 5 ~ 95% (rutubet)
Titreşim/şok bağışıklığı	Uluslararası standartlar: IEC 61131-2, IEC 68-2-6 (TEST Fc)/IEC 61131-2 & IEC 68-2-27 (TEST Ea)
Ağırlık (g)	60g

3 Kurulum

1. Ürünün bağlantı portunu açığa çıkarmak için kapağı tornavida ile açınız.
2. Tornavida yardımı ile bağlantı klipini açınız.



3. Üniteyi MPU'ya köşelerindeki pin delikleri birbirine geçecek şekilde doğru bağlayınız.
4. MPU üzerindeki bağlantı kliplerini bastırarak ilave modülü sabitleyin.



5. I/O nokta adresleri: MPU'ya bağlı ilk ünite giriş noktaları X20'den çıkış noktaları ise Y20'den başlar. Bu kural tüm MPU'lara bağlı ilave üniteler için geçerlidir. Aşağıdaki ürünler yan yana bağlandığında,

Model	Giriş noktaları	Çıkış noktaları	Giriş nokta adres	Çıkış nokta adres
DVP12SA11R	8	4	X0 ~ X7	Y0 ~ Y3
DVP08ST11N	8	0	X20 ~ X27	-
DVP16SP11R	8	8	X30 ~ X37	Y20 ~ Y37

4 Sorun Giderme

■ LED İndikatör girişi

Giriş sinyallerinin On/Off durumu LED indikatörlerden görünebilir. Giriş ON olduğu zaman, ilgili LED indikatör ON olur. Eğer hata oluşursa, HPP/WPLSoft kullanarak LED'lerin ne giriş sinyallerinin normal olduğunu kontrol ediniz. Lütfen aşağıdakilere de dikkat ediniz:

1. DVP08ST11N ünitesini doğrudan güneş ışığının temas ettiği yerlere veya sıcaklık yayan nesnelere yakınına kurmayınız. Yüksek sıcaklık DVP08ST11N modülü çalışmasını etkileyebilir.
2. Lütfen paneldeki tozları uygun şekilde temizleyiniz.

TÜRKİYE İTHALATÇI FIRMA
FABRİKA AYGITLARI SİSTEM TEKNOLOJİSİ BİLGİSAYAR YAZILIM VE ELEKTRONİK PAZARLAMA İTHALAT İHRACAT ANONİM ŞİRKETİ
FAST Plaza Küçükçekirtek Mh. Dereyolu Sk. No:4
ATAŞEHİR / İSTANBUL
T: + (90) 216 574 94 34 F: + (90) 216 574 16 60
E: satis@fasttd.net W: www.fasttd.net

Üretici Firma
Delta Electronics, Inc.

Taiwan
31-1 Kingbang Road,
Gushan Industrial Zone,
Taoyuan County 33375,
Taiwan
TEL: 886-3-362-6301
FAX: 886-3-362-7267

China
1688 Jiangning East Road,
Wujiang Economic Development Zone
Wujiang City, Jiang Su Province,
People's Republic of China (Post code: 215200)
TEL: 86-512-6346-3008
FAX: 86-769-6340-7290