

## Mitsubishi Q Series Ethernet

( Supports QJ71E71 / QJ71E71-B2 / QJ71E71-B5 / QJ71E71-100 Series Module )

### HMI Factory Setting:

Baud rate: 192.168.0.1

Controller Station Number: 1025

Control Area / Status Area: D0 / D10

### Connection

Standard jumper Cable/ Network Cable without jumper (Auto-detected by HMI)

### Definition of PLC Read/Write Address

#### a. Registers

Type	Format	Read/Write Range	Data Length	Note
	Word No. (n)			
Input	Xn	X0 - X1FF0	Word	Hexadecimal, <a href="#">2</a>
Output	Yn	Y0 - Y1FF0	Word	Hexadecimal, <a href="#">2</a>
Internal Relay	Mn	M0 - M8176	Word	<a href="#">2</a>
Special Internal Relay	Mn	M9000 - M9240	Word	<a href="#">3</a>
Link Relay	Bn	B0 - B1FF0	Word	Hexadecimal, <a href="#">2</a>
Annunciator	Fn	F0 - F2032	Word	<a href="#">2</a>
Timer Value	TNn	TN0 - TN2047	Word	
Counter Value	CNn	CN0 - CN2047	Word	
Data Register	Dn	D0 - D8191	Word	
Special Data Register	Dn	D9000 - D9255	Word	
Link Register	Wn	W0 - W1FFF	Word	Hexadecimal

#### b. Contacts

Type	Format	Read/Write Range	Note
	Bit No. (b)		
Input	Xb	X0 - X1FFF	Hexadecimal

Output	Yb	Y0 - Y1FFF	Hexadecimal
Internal Relay	Mb	M0 - M8191	
Special Internal Relay	Mb	M9000 - M9255	
Type	Format	Read/Write Range	Note
	Bit No. (b)		
Link Relay	Bb	B0 - B1FFF	Hexadecimal
Annunciator	Fb	F0 - F2047	
Timer Contact	TSb	TS0 - TS2047	
Timer Coil	TCb	TC0 - TC2047	
Counter Contact	CSb	CS0 - CS2047	
Counter Coil	CCb	CC0 - CC2047	

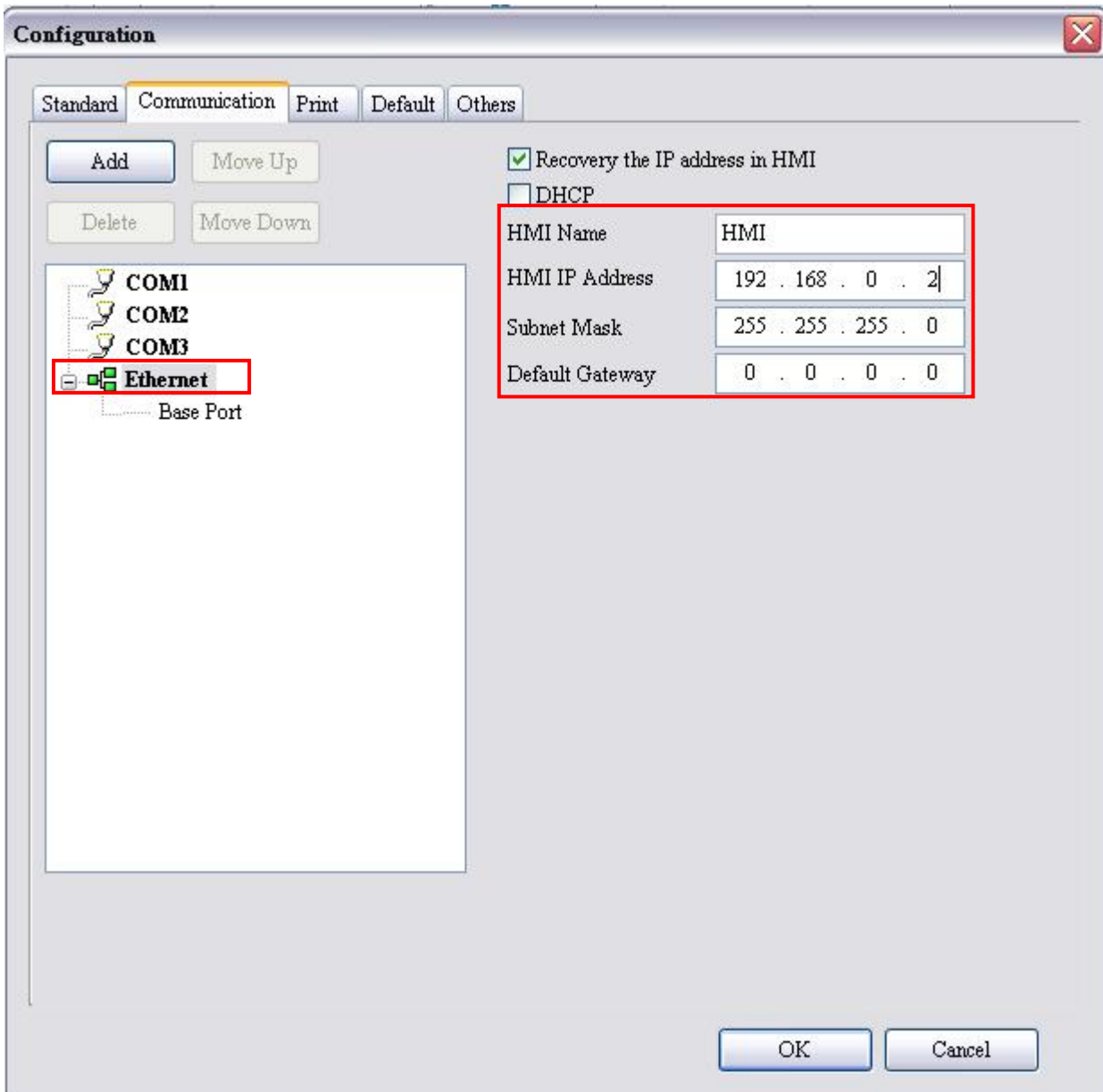
 **NOTE**

- 1) Before using this communication protocol, the user needs to set communication module via GX Developer programming tools. For more detailed information regarding the setting method, please refers to Mitsubishi PLC User Manual.
- 2) The device address must be the multiple of 16.
- 3) The device address must be the multiple of 16 plus 9000.

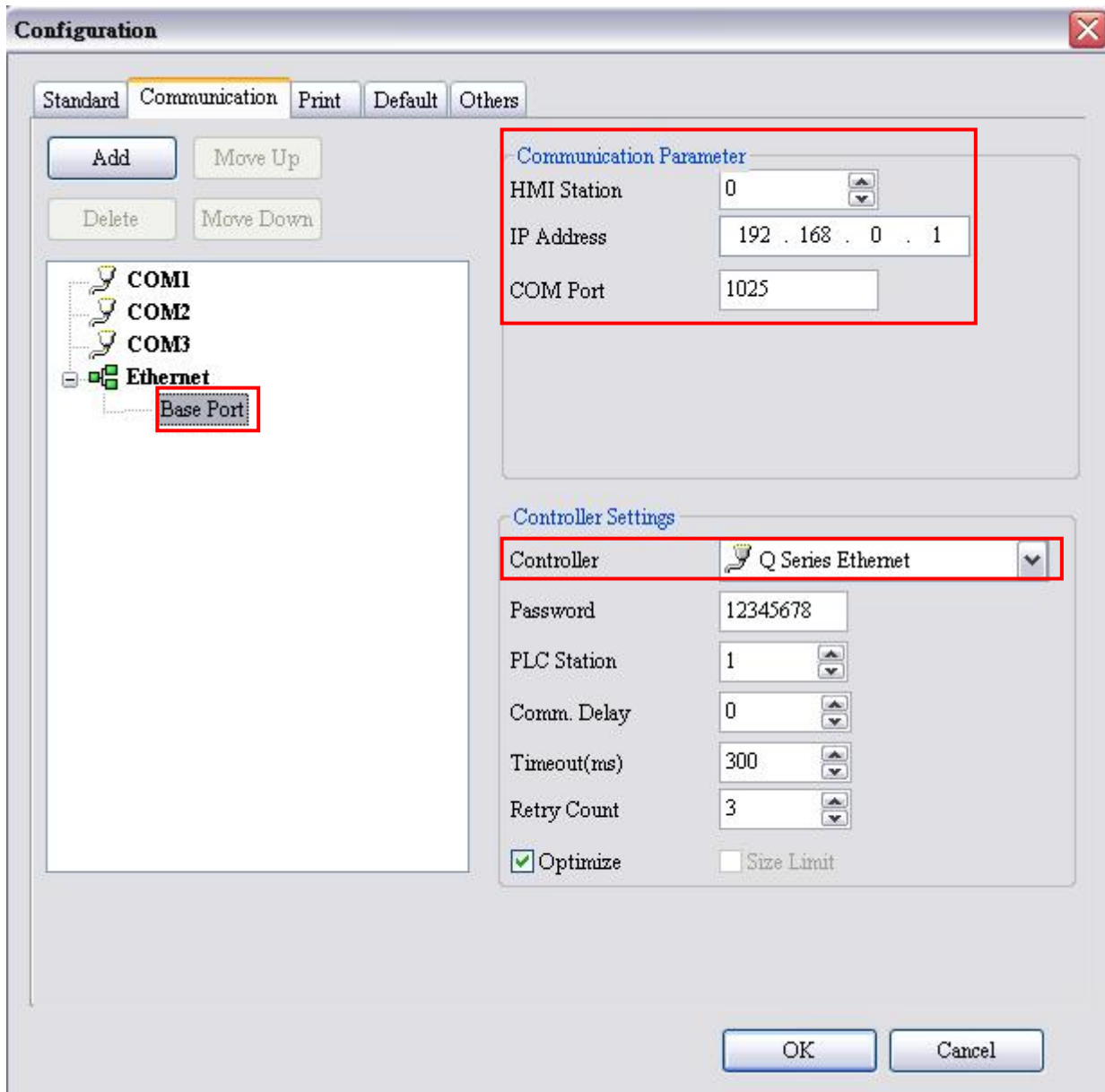
## Settings

### Screen Editor

#### 1. HMI Configuration Setting



## 2. PLC Configuration Setting



### GX Developer (V8.35M)

#### 1. Network Parameter MNET/10H Ethernet Settings

Item	Setting
Network Type	Ethernet
Starting I/O No.	0000
Network No.	1
Group No.	1
Station No.	1
Mode	On-line

## 2. Operation Settings

Item	Setting
Communication Data Code	Binary code
Initial Timing	Always wait for OPEN
IP Address	192.168.0.1
Send Frame Setting	Ethernet (V2.0)
Enable Write at RUN time	Enable
TCP Living Confirmation Setting	Use the KeepAlive

## 3. Open Settings

Item	Setting
Protocol	TCP
Open Method	Unpassive
Fixed buffer	Send
Fixed buffer communication procedure	Procedure exist
Existence confirmation	No confirm
Host Station Port No.	0401 (HEX)

4. For more detailed information regarding the setting method, please refer to Mitsubishi PLC User Manual.