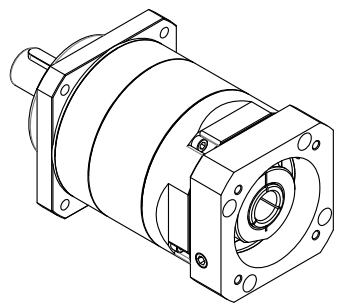
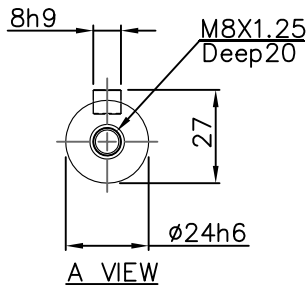


1

2

3

4

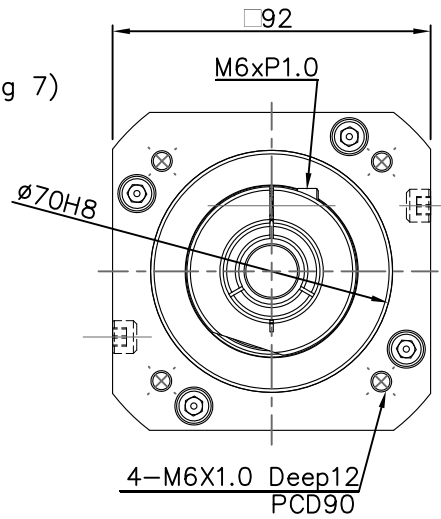
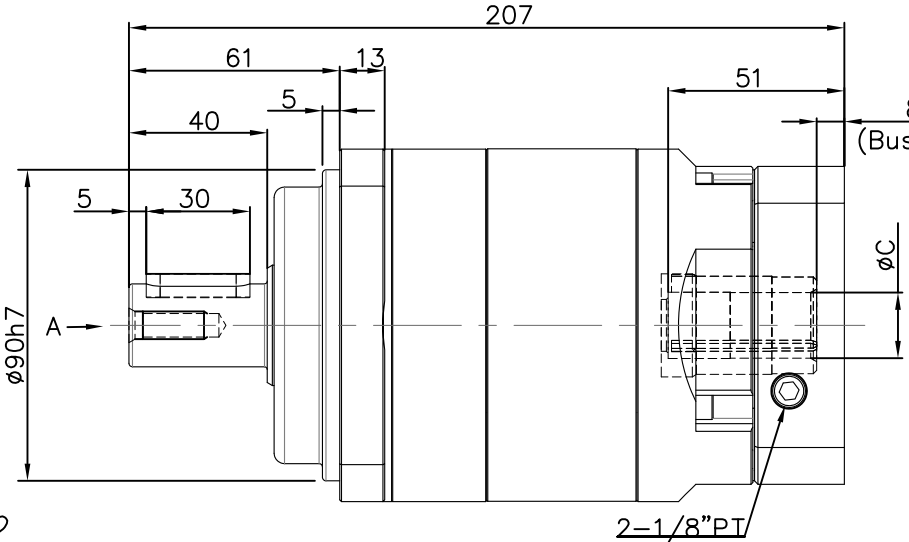
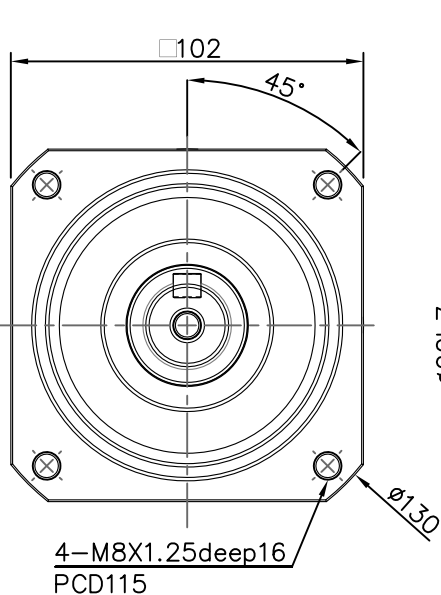


A

A

B

B



- NOTES.
1. Match Motor Flange: $\phi 70$
 2. Output shaft have keyway, without keyway is optional.
 3. Bushing is supplied to input bore $\phi 10, \phi 12.7, \phi 14, \phi 16, \phi 19$ or $\phi 22$.
 4. $\phi C = \phi 19$ or $\phi 24$.

C

C

MODEL	段數 (Stage)	減速比 (Ratio)	背隙 (Arcmin)	匹配馬達出軸直徑&長度
PA100-A015CC1430	雙段	15	12	14 & 30
PA100-A020CC1430	雙段	20	12	14 & 30
PA100-A025CC1430	雙段	25	12	14 & 30
PA100-A030CC1430	雙段	30	12	14 & 30
PA100-A035CC1430	雙段	35	12	14 & 30
PA100-A040CC1430	雙段	40	12	14 & 30
PA100-A050CC1430	雙段	50	12	14 & 30
PA100-A070CC1430	雙段	70	12	14 & 30
PA100-A100CC1430	雙段	100	12	14 & 30

Ration Application	15~100
Power Application	400W ~ 1.5KW

台達電子工業股份有限公司 DELTA ELECTRONICS, INC.		Drawn:	Design:
THESE DRAWINGS AND SPECIFICATIONS ARE THE PROPERTY OF DELTA ELECTRONICS, INC. AND SHALL NOT BE REPRODUCED OR USED AS THE BASIS FOR THE MANUFACTURE OR SELL OF APPARATUS OR DEVICES WITHOUT PERMISSION.		Description: Planetary Gearhead Servo Box	
DIMENSIONAL TOLERANCES () HOLES : ± 0.05 ANGLES : $\pm 0.5^\circ$ <30 : ± 0.25 DECIMALS UP-100 : ± 0.2 250-300 : ± 0.4 UP-600 : ± 1.5 >30-100 : ± 0.35 X : ± 0.3 100-150 : ± 0.25 300-350 : ± 0.45 600-900 : ± 2.4 >100-300 : ± 0.5 X,X : ± 0.2 150-200 : ± 0.3 350-400 : ± 0.5 900-OVER : ± 3.1 ABOVE 300 : ± 0.8 X,XX : ± 0.1 200-250 : ± 0.35		Part No.	REV.
SCALE: UNIT: mm USED ON: Planetary Gearhead		A3 SIZE	X0
SHEET		OF	ISSUE DATE:

1

2

3

4