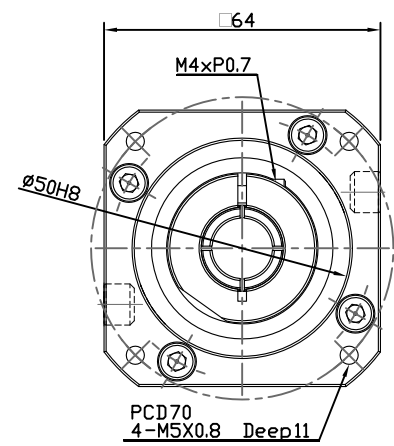
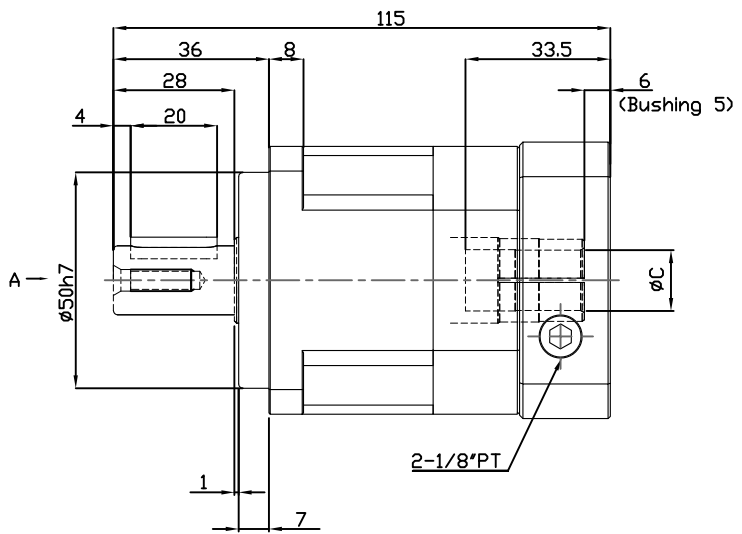
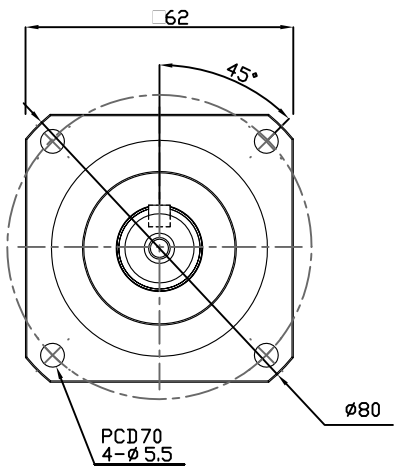


1 2 3 4

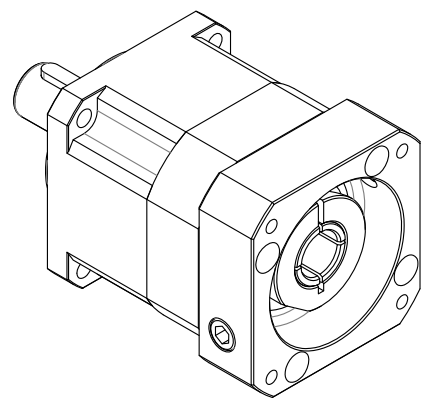
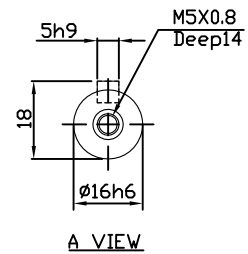
A

A



B

B



C

C

- NOTES.
1. Match Motor Flange: $\phi 50$
 2. Output shaft have keyway, without keyway is optional.
 3. Bushing is supplied to input bore $\phi 6.35, \phi 8, \phi 10, \phi 11$ or $\phi 12$
 4. $\phi C = \phi 14$

Ration Application	3 / 4 / 5 / 6 / 7 / 8 / 9 / 10
Power Application	100W ~ 400W

MODEL	段數 (Stage)	減速比 (Ratio)	背隙 (Arcmin)	匹配馬達出軸直徑&長度
PS062-C0053B1430	單段	5	3	14 & 30
PS062-C0103B1430	單段	10	3	14 & 30

台達電子工業股份有限公司 DELTA ELECTRONICS, INC. Drawn: Design:

THESE DRAWINGS AND SPECIFICATIONS ARE THE PROPERTY OF DELTA ELECTRONICS, INC. AND SHALL NOT BE REPRODUCED OR USED AS THE BASIS FOR THE MANUFACTURE OR SELL OF APPARATUS OR DEVICES WITHOUT PERMISSION.

THIRD ANGLE PROJECTION Description: **Planetary Gearhead Servo Box**

DIMENSIONAL TOLERANCES		HOLES: ± 0.05 ANGLES: $\pm 0.5^\circ$		Part No.	REV.		
<30	: ± 0.25 DECIMALS	UP-100	: ± 0.2			250-300	: ± 0.4
>30-100	: ± 0.35 X	100-150	: ± 0.25	300-350	: ± 0.45	600-900	: ± 2.4
>100-300	: ± 0.5 X,X	150-200	: ± 0.3	350-400	: ± 0.5	900-OVER	: ± 3.1
ABOVE 300	: ± 0.6 X,XX	200-250	: ± 0.35				
SCALE	UNIT	mm	USED ON	Planetary Gearhead		SHEET OF ISSUE DATE:	

1 2 3 4