

TP-PCC01

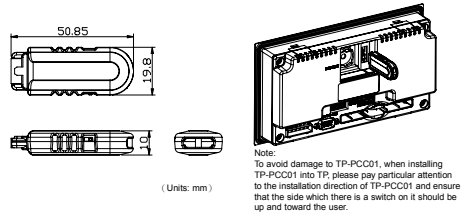
Instruction Sheet Bilgi Dökümanı 安裝說明 安裝說明

Program Copy Card
Program Kopyalama Kartı
程式複製卡
程序复制卡



<ul style="list-style-type: none"> Remove the program TP will display: TP-PCC01 will be Erased! Press Enter to Confirm Press ESC to Exit 	<ul style="list-style-type: none"> If the model type of TP does not match the model type of the program set in TP-PCC01. TP will display: TP series and TP-PCC01 is different Please Remove the TP-PCC01 and Reboot
<ul style="list-style-type: none"> If the model type of TP and the model type of the program set in TP-PCC01 is matched. TP will display: Press Enter to Confirm TP series → TP-PCC01 Press Esc to Exit Press CLR to Erase TP-PCC01 	<ul style="list-style-type: none"> If the model type of TP and the model type of the program set in TP-PCC01 is matched. TP will display: Press Enter to Confirm TP series → TP series Press Esc to Exit Press <Enter> key to confirm the "writing in" operation.
<ul style="list-style-type: none"> When executing "writing in" operation, TP will display: TP series → TP-PCC01 Please wait! 	<ul style="list-style-type: none"> When executing "writing in" operation, TP will display: TP-PCC01 → TP series Please wait!
<ul style="list-style-type: none"> "Writing in" operation is completed. TP will display: Please Remove the TP-PCC01 and Reboot. Please turn the power of TP off and remove TP-PCC01 from TP. At this time, all TP programs and system parameters stored in TP-PCC01 have been copied to TP-PCC01. 	<ul style="list-style-type: none"> "Writing in" operation is completed. TP will display: Please Remove the TP-PCC01 and Reboot. Please turn the power of TP off and remove TP-PCC01 from TP. At this time, all programs and system parameters stored in TP-PCC01 have been copied to TP.
<ul style="list-style-type: none"> Turn the power of TP off and then remove TP-PCC01 when the message "Please Remove the TP-PCC01 and Reboot" displays on the screen of TP. 	<ul style="list-style-type: none"> Turn the power of TP off and then remove TP-PCC01 when the message "Please Remove the TP-PCC01 and Reboot" displays on the screen of TP.

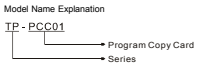
Dimension and Installation



Warning

- TP-PCC01 doesn't support plug and play function. Please turn off power before plugging.
- The voltage for TP-PCC01 is supplied from TP extension slot. Please ensure that plug direction is correct when connecting TP-PCC01 to TP extension slot in case danger and damage on the device may occur.

Introduction



Electrical Specifications

Item	Model Name	TP-PCC01
Data Reserved Life / Times for Writing in		20 years / one hundred thousand times
Operation Temperature		0°C ~ 55°C
Weight / Dimensions		6g / 50.85×19.8×10 mm

Program Copy Card Functions

Compatible firmware version: TP05G/TP08G (V1.00 and above)
Using program copy card functions can copy the whole system parameters and application programs set in one TP05G/TP08G to another TP05G/TP08G rapidly. It can save much time and manpower. The operation is described in the following sections.

TP-PCC01 : Program Copy Card
TP : Terminal Panel (TP05G/TP08G Series)

Step	TP → TP-PCC01 (Copy TP program to TP-PCC01)	TP-PCC01 → TP (Copy program in TP-PCC01 to TP)
1	Turn the switch on the TP-PCC01 to TP → TP-PCC01	Turn the switch on the TP-PCC01 to TP-PCC01 → TP
2	Insert the TP-PCC01 into the extension slot of TP	Insert the TP-PCC01 into the extension slot of TP
3	Apply power to TP	Apply power to TP
4	<ul style="list-style-type: none"> If the model type of TP does not match the model type of the program set in TP-PCC01: (TP05G program and TP08G program can't be compatible with each other. It means that TP05G program can't be opened and edited by TP08G, and TP08G program can't be opened and edited by TP05G either.) TP will display: TP series and TP-PCC01 is different Press Enter to Confirm TP series → TP-PCC01 Press Esc to Exit Press CLR to Erase TP-PCC01 	<ul style="list-style-type: none"> If there is no program in TP-PCC01. TP will display: The TP-PCC01 is Empty TP-PCC01 → TP series is illegal

注意事項

- 本機不支持熱插拔，在實際插拔時，請務必先關斷電源。
- 本機由主機擴充槽提供電壓，與主機擴充槽結合時，務必不可及插錯則會造成嚴重損壞。

產品簡介



功能／電氣規格

項目	機型	TP-PCC01
資料保存 / 寫入次數		20年 / 十萬次
使用溫度範圍		0°C ~ 55°C
重量/外型尺寸		6g / 50.85×19.8×10 mm

程式複製卡功能

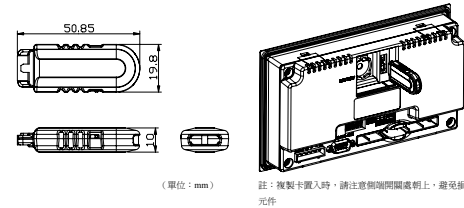
適用程式版本：TP05G/TP08G (V1.00 以上)
使用程式複製卡功能，它可將整台人機所設定的系統參數及內含的應用程式，快速地完全複製到另一台人機，其操作方法如下步驟，裝置簡稱如下：

TP-PCC01：程式複製卡 (Program Copy Card)
TP：人機 (TP05/TP08 Series)

步驟	TP → TP-PCC01 (TP 資料寫入 TP-PCC01)	TP-PCC01 → TP (TP-PCC01 資料寫入 TP)
一	將程式複製卡上的開關切到 TP → TP-PCC01	將程式複製卡上的開關切到 TP-PCC01 → TP
二	將程式複製卡插入 TP 背面擴充槽	將程式複製卡插入 TP 背面擴充槽
三	輸入電源至 TP	輸入電源至 TP
四	<ul style="list-style-type: none"> 若 TP 的機型與程式複製卡內含程式機型不符 (TP05G 和 TP08G 的應用程式不可互用) TP 顯示: TP series and TP-PCC01 is different Press Enter to Confirm TP series → TP-PCC01 Press Esc to Exit Press CLR to Erase TP-PCC01 	<ul style="list-style-type: none"> 若程式複製卡內未含程式 TP 顯示: The TP-PCC01 is Empty TP-PCC01 → TP series is illegal

<ul style="list-style-type: none"> 程式清除 TP 顯示: TP-PCC01 will be Erased! Press Enter to Confirm Press ESC to Exit 	<ul style="list-style-type: none"> 若 TP 的機型與程式複製卡內含程式機型不符 TP 顯示: TP series and TP-PCC01 is different Please Remove the TP-PCC01 and Reboot
<ul style="list-style-type: none"> 機型相符 TP 顯示: Press Enter to Confirm TP series → TP-PCC01 Press Esc to Exit Press CLR to Erase TP-PCC01 按下 <Enter> 確認寫入動作 	<ul style="list-style-type: none"> 機型相符 TP 顯示: Press Enter to Confirm TP series → TP series Press Esc to Exit 按下 <Enter> 確認寫入動作
<ul style="list-style-type: none"> 寫入動作執行中 TP 顯示: TP series → TP-PCC01 Please wait! 	<ul style="list-style-type: none"> 寫入動作執行中 TP 顯示: TP-PCC01 → TP series Please wait!
<ul style="list-style-type: none"> 動作完成 TP 顯示: Please Remove the TP-PCC01 and Reboot. 請關閉電源，取出 TP-PCC01，此時 TP-PCC01 內部具有 TP 中的的程式及所有系統參數 	<ul style="list-style-type: none"> 動作完成 TP 顯示: Please Remove the TP-PCC01 and Reboot. 請關閉電源，取出 TP-PCC01，此時 TP 內部具有 TP-PCC01 中的的程式及所有系統參數
<ul style="list-style-type: none"> 螢幕上顯示移除程式複製卡時請先斷電後移除 	<ul style="list-style-type: none"> 螢幕上顯示移除程式複製卡時請先斷電後移除

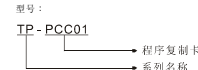
外觀及安裝方式



注意事項

- 本機不支持熱插拔，在實際插拔時，請務必先關斷電源。
- 本機由主機擴充槽提供電壓，與主機擴充槽結合時，務必不可及插錯則會造成嚴重損壞。

產品簡介



功能／電氣規格

項目	機型	TP-PCC01
數據保存 / 寫入次數		20年 / 十萬次
使用溫度範圍		0°C ~ 55°C
重量/外型尺寸		6g / 50.85×19.8×10 mm

程序复制卡功能

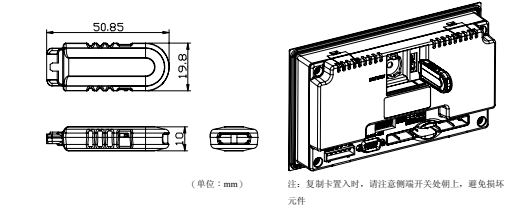
適用程序版本：TP05G/TP08G (V1.00 以上)
使用程序复制卡功能，它可將整台人機所設定的系統參數及內含的應用程式，快速地完全复制到另一台人機，其操作方法如下步驟，裝置簡稱如下：

TP-PCC01：程序复制卡 (Program Copy Card)
TP：人機 (TP05/TP08 Series)

步驟	TP → TP-PCC01 (TP 數據寫入 TP-PCC01)	TP-PCC01 → TP (TP-PCC01 數據寫入 TP)
一	將程序复制卡上的開關切到 TP → TP-PCC01	將程序复制卡上的開關切到 TP-PCC01 → TP
二	將程序复制卡插入 TP 背面擴充槽	將程序复制卡插入 TP 背面擴充槽
三	輸入電源至 TP	輸入電源至 TP
四	<ul style="list-style-type: none"> 若 TP 的機型與程序复制卡內含程序機型不符 (TP05G 和 TP08G 的應用程式不可互用) TP 顯示: TP series and TP-PCC01 is different Press Enter to Confirm TP series → TP-PCC01 Press Esc to Exit Press CLR to Erase TP-PCC01 	<ul style="list-style-type: none"> 若程序复制卡內未含程序 TP 顯示: The TP-PCC01 is Empty TP-PCC01 → TP series is illegal

<ul style="list-style-type: none"> 程序清除 TP 顯示: TP-PCC01 will be Erased! Press Enter to Confirm Press ESC to Exit 	<ul style="list-style-type: none"> 若 TP 的機型與程序复制卡內含程序機型不符 TP 顯示: TP series and TP-PCC01 is different Please Remove the TP-PCC01 and Reboot
<ul style="list-style-type: none"> 機型相符 TP 顯示: Press Enter to Confirm TP series → TP-PCC01 Press Esc to Exit Press CLR to Erase TP-PCC01 按下 <Enter> 確認寫入動作 	<ul style="list-style-type: none"> 機型相符 TP 顯示: Press Enter to Confirm TP series → TP series Press Esc to Exit 按下 <Enter> 確認寫入動作
<ul style="list-style-type: none"> 寫入動作執行中 TP 顯示: TP series → TP-PCC01 Please wait! 	<ul style="list-style-type: none"> 寫入動作執行中 TP 顯示: TP-PCC01 → TP series Please wait!
<ul style="list-style-type: none"> 動作完成 TP 顯示: Please Remove the TP-PCC01 and Reboot. 請關閉電源，取出 TP-PCC01，此時 TP-PCC01 內部具有 TP 中的的程式及所有系統參數 	<ul style="list-style-type: none"> 動作完成 TP 顯示: Please Remove the TP-PCC01 and Reboot. 請關閉電源，取出 TP-PCC01，此時 TP 內部具有 TP-PCC01 中的的程式及所有系統參數
<ul style="list-style-type: none"> 螢幕上顯示移除程序复制卡時請先斷電後移除 	<ul style="list-style-type: none"> 螢幕上顯示移除程序复制卡時請先斷電後移除

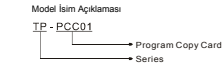
外觀及安裝方式



Uyarı

- TP-PCC01 kullanılmayı ve fonksiyonları desteklenmez. Kullandından önce enerjiyi kesin.
- TP-PCC01 voltajı TP serisi slotundan beslenir. Kullandıldığında TP-PCC01'in TP ağına doğru yapıldığından emin olun. Cihazda dışa çıkabilecek keza ve şok tehlikesi olabilir için.

Önsöz



Elektriksel Özellikler

Maddde	Model İsmi	TP-PCC01
Data Rezerve Ömrü / Yazma sayısı		20 yıl / 100.000 kere
Saklama Sıcaklığı		0°C ~ 55°C
Ağırlık / Boyutlar		6g / 50.85×19.8×10 mm

Program Kopyalama Kart Fonksiyonları

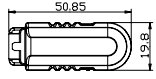
Uygun yazılım versiyonu: TP05G/TP08G (V1.00 ve üzeri)
Program kopyalama kart fonksiyonu tüm sistem parametrelerini ve uygulama programlarını bir TP05G/TP08G'den diğer TP05G/TP08G hıza bir şekilde kopyalaymayı sağlar. Program Kopyalama Kartı ile zaman ve işgücü tasarrufu sağlanır. İşlem aşağıdaki gibidir:

TP-PCC01 : Program Kopyalama Kartı
TP : Terminal Panel (TP05G/TP08G Series)

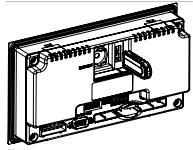
Adım	TP → TP-PCC01	TP-PCC01 → TP
1	TP-PCC01 üzerindeki anahtar TP → TP-PCC01 yapılı	TP-PCC01 üzerindeki anahtar TP-PCC01 → TP yapılı
2	TP-PCC01 TP üzerindeki laive slotu takılır	TP-PCC01 TP üzerindeki laive slotu takılır
3	TP cihaz enerjilendirilir	TP cihaz enerjilendirilir
4	<ul style="list-style-type: none"> Eğer TP model tip TP-PCC01 içerisindeki program ile uyumlu ise (TP05G program ve TP08G program herhangi birliğe uyumlu değil. Bu TP05G program açılmadığını ve TP08G tarafından düzenlendiğini ve TP05G açılmadığını ve TP05G düzenlendiğini anlamaya gelir.) TP ekranında görüntülenir: TP series and TP-PCC01 is different Press Enter to Confirm TP series → TP-PCC01 Press Esc to Exit Press CLR to Erase TP-PCC01 	<ul style="list-style-type: none"> Eğer TP-PCC01 içinde program yoksa. TP ekranında görüntülenir: The TP-PCC01 is Empty TP-PCC01 → TP series is illegal

5	<ul style="list-style-type: none"> Programı kaldır TP ekranında görüntülenir: TP-PCC01 will be Erased! Press Enter to Confirm Press ESC to Exit 	<ul style="list-style-type: none"> Eğer TP in model tipi TP-PCC01 içinde programın model tipiyle uyumlu değil ise. TP ekranında görüntülenir: TP series and TP-PCC01 is different Please Remove the TP-PCC01 and Reboot
	<ul style="list-style-type: none"> Eğer TP in model tipi ve TP-PCC01 içinde program model tipi ile uyumlu. TP ekranında görüntülenir: Press Enter to Confirm TP series→TP-PCC01 Press Esc to Exit Press CLR to Erase TP-PCC01 "writing in" onaylamak için <Enter> tuşuna basın. 	<ul style="list-style-type: none"> Eğer TP model tipi ve TP-PCC01 içinde program model tipi ile uyumlu. TP ekranında görüntülenir: Press Enter to Confirm TP-PCC01 → TP series Press Esc to Exit "writing in" onaylamak için <Enter> tuşuna basın
	<ul style="list-style-type: none"> "writing in" çalışması sürüyorsa. TP ekranında görüntülenir: TP series →TP-PCC01 Please wait! 	<ul style="list-style-type: none"> "writing in" çalışması sürüyorsa. TP ekranında görüntülenir: TP-PCC01 → TP series Please wait!
	<ul style="list-style-type: none"> "Writing in" çalışması tamamlandı. TP ekranında görüntülenir : Please Remove the TP-PCC01 and Reboot. Lütfen TP'nin enerjisini kesin ve TP'den TP-PCC01 kaldırın. Aynı zaman da tüm TP programları ve sistem parametrelerini TP-PCC01'den kopyalayın. 	<ul style="list-style-type: none"> "Writing in" çalışması tamamlandı. TP ekranında görüntülenir: Please Remove the TP-PCC01 and Reboot. Lütfen TP'nin enerjisini kesin ve TP'den TP-PCC01 kaldırın. Aynı zaman da tüm program ve sistem parametreleri TP'ye kopyalanan TP-PCC01 içinde saklanır.
6	<ul style="list-style-type: none"> Lütfen TP'nin enerjisini kesin ve sonra TP ekranını da "Please Remove the TP-PCC01 and Reboot" mesaj geldiğinde TP-PCC01 kaldırın. 	<ul style="list-style-type: none"> Lütfen TP'nin enerjisini kesin ve sonra TP ekranını da "Please Remove the TP-PCC01 and Reboot" mesaj geldiğinde TP-PCC01 kaldırın.

Boyutlar ve Kurulum



(Birim : mm)



Not:
TP-PCC01 'de zararları önlemek için, TP-PCC01 den TP'ye kuruluğu zaman, Lütfen TP-PCC01 in kurulum yönünde detaylı ikazlara dikkat edin ve anahtarın on yukarda ve kullanıcağı doğru olduğundan emin olun.