

YOKOGAWA ACE PLC

HMI Factory Setting:

Baud rate: 9600, 8, Even, 1 (ASCII mode)

Controller Station Number: 1

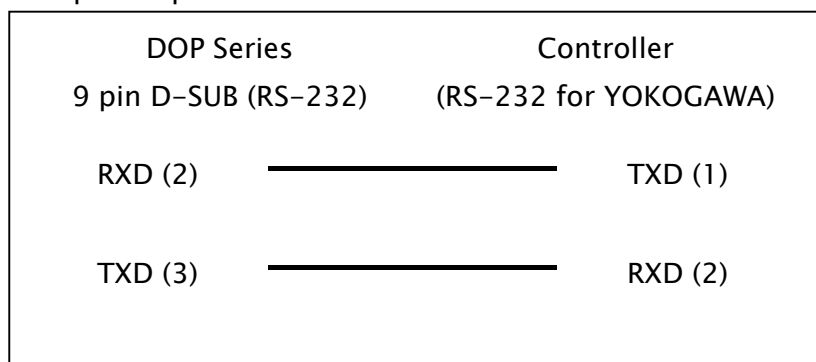
CPU No (HMI Station Number) : 0 ([Note2](#))

Control Area / Status Area: D1 / D10

Connection

a. RS-232 (DOP-A/AE/AS, DOP-B Series)

It requires specific cable of YOKOGAWA ACE PLC



Definition of PLC Read/Write Address

a. Registers

Type	Format	Read/Write Range	Data Length	Note
	Word No.(n)			
WORD_DEVICE_X	Xn	X201 - X65464	Word	3
WORD_DEVICE_Y	Yn	Y201 - Y65464	Word	3
WORD_DEVICE_I	In	I1 - I16384	Word	4
WORD_DEVICE_E	En	E1 - E4096	Word	4
WORD_DEVICE_L	Ln	L1 - L65488	Word	4
WORD_DEVICE_M	Mn	M1 - M9984	Word	4
WORD_DEVICE_TP	TPn	TP1 - TP3072	Word	
WORD_DEVICE_CP	CPn	CP1 - CP3072	Word	
WORD_DEVICE_D	Dn	D1 - D8192	Word	
WORD_DEVICE_B	Bn	B1 - B32768	Word	
WORD_DEVICE_W	Wn	W1 - W65499	Word	
WORD_DEVICE_Z	Zn	Z1 - Z512	Word	

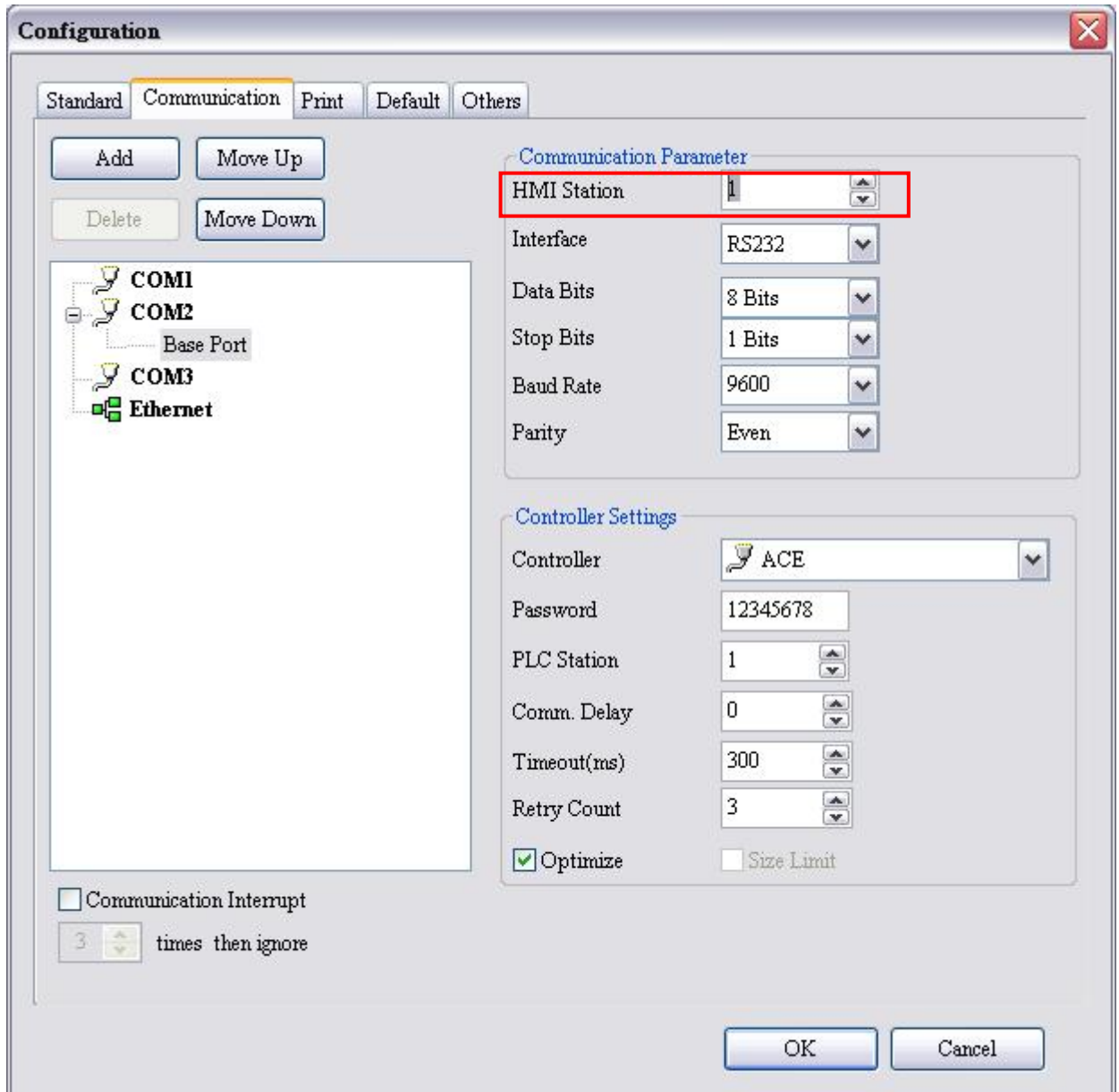
Type	Format	Read/Write Range	Data Length	Note
	Word No.(n)			
WORD_DEVICE_V	Vn	V1 - V64	Word	
WORD_DEVICE_R	Rn	R1 - R4096	Word	
WORD_DEVICE_TS	TSn	TS1 - TS3072	Word	
WORD_DEVICE_CS	CSn	CS1 - CS3072	Word	

b. Contacts

Type	Format	Read/Write Range	Note
	Bit No.(b)		
BIT_DEVICE_X	Xb	X201 - X65464	5
BIT_DEVICE_Y	Yb	Y201 - Y65464	5
BIT_DEVICE_I	Ib	I1 - I16384	
BIT_DEVICE_E	Eb	E1 - E4096	
BIT_DEVICE_L	Lb	L1 - L65488	
BIT_DEVICE_M	Mb	M1 - M9984	
BIT_DEVICE_TU	TUb	TU1 - TU3072	
BIT_DEVICE_CU	CUb	CU1 - CU3072	

 **NOTE**

- 1) Set the PLC to “not using Checksum” and “not using End character”.
- 2) CPU number in this communication protocol represents HMI Station Number, the setting of CPU number must be greater than 1.



- 3) The last two digits of the device address must be the multiple of 16 + 1 but less than 65.
- 4) The device address must be the multiple of 16 + 1.
- 5) The last two digits of the device address must be less than 65.